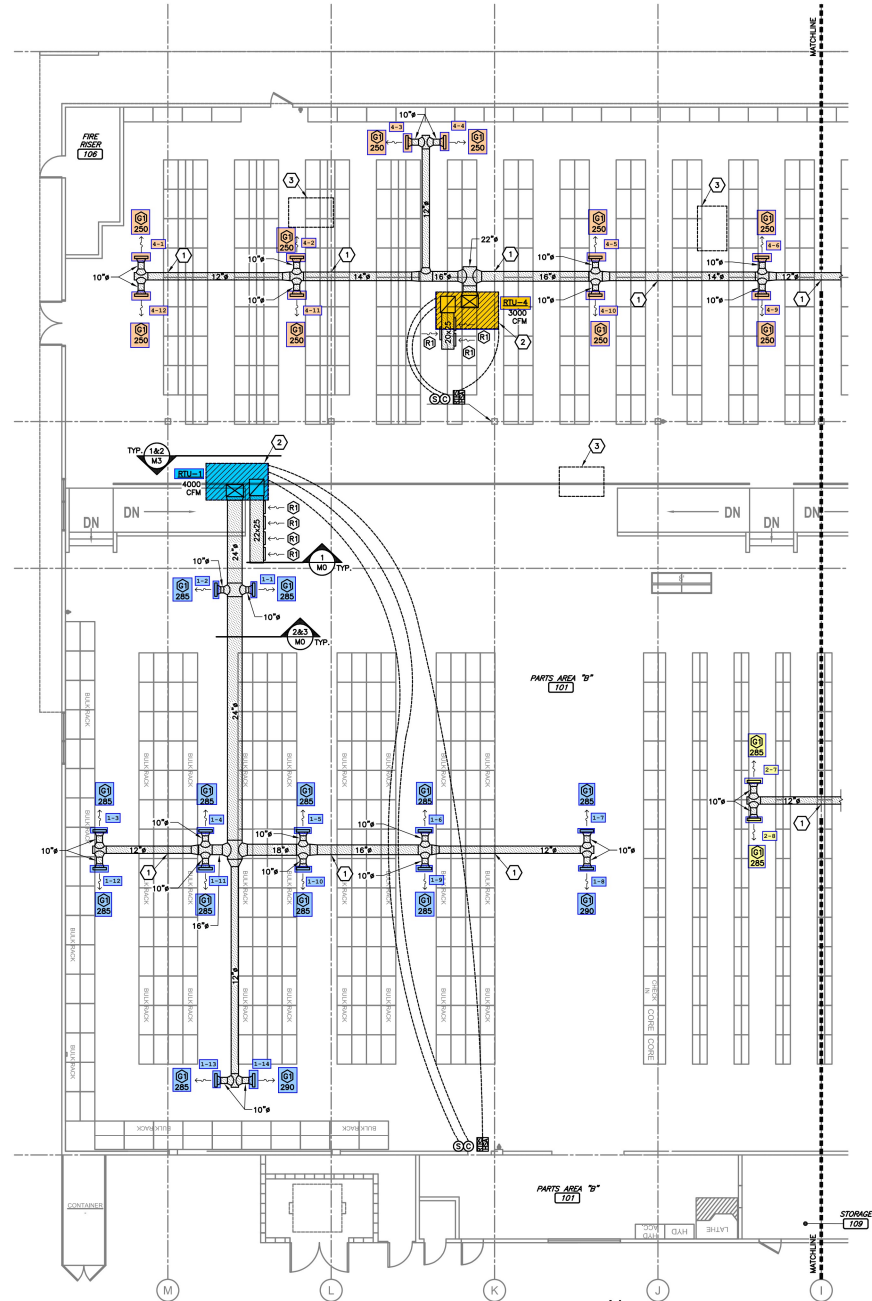


HVAC - KEYNOTES

- 1 KEEP MAIN DUCT TRUNK AS HIGH AS POSSIBLE. PROVIDE 45 DEGREE BENDS TO DIP DUCTWORK BELOW BEAMS AS REQUIRED TO KEEP DUCTWORK ABOVE LIGHTING.
- 2 NEW RTU AT EXISTING ROOF CURB. REMOVE EXISTING RTU AND PROVIDE NEW RTU WITH COMPATIBLE ROOF CURB ADAPTER.
- 3 RTU IS EXISTING AND SHALL BE ABANDONED IN PLACE. EXISTING DUCTWORK SHALL BE REMOVED AND CAPPED AT RTU OPENINGS.



HVAC PLAN B

SCALE: 1/8" = 1'-0"



DATE SIGNED: 11.14.2021
 ENGINEER BY: RYAN S. JONES
 LICENSE NUMBER: E21331
 STATE OF CALIFORNIA
 REGISTERED PROFESSIONAL ENGINEER
 ELECTRICAL

BY SIGNING THIS SEAL, THE ENGINEER ASSUMES RESPONSIBILITY FOR ALL CHANGES, SPECIFICATIONS, OR INSTRUMENTS ARE DECLARED.

CJD
 Engineering | Energy | Innovation
 225 Westwood Blvd., Suite 200, Westwood, CA 94097
 Tel: 415.272.1700 | www.cjdgroup.com

PROJECT:
O'REILLY AUTO PARTS STORE - CN3
 1500 MONUMENT RD
 CONCORD, CA 94528

HVAC PLAN B



REV.	DESCRIPTION	DATE

DRAWN BY: JBR
 DATE: 11/14/23
 PROJECT NUMBER: CN3
 SHEET NUMBER: M2

CHECKED BY: CRF